



ST. FRANCIS JUNIOR HIGH

3-Year Education Plan and Annual Education Results Report (AERR) for Public/Separate/Francophone Schools

Each school authority establishes requirements for the content and process for school education plans and annual reports as part of its accountability system. Schools should prepare their education plans and annual reports based on specifications provided by their school authority. For details please refer to the *Policy and Requirements for Planning and Results Reporting*: <https://education.alberta.ca/school-authority-planning-resources/current-requirements/>.

Combined 2016 Accountability Pillar Overall Summary

Measure Category	Measure Category Evaluation	Measure	St. Francis Junior High School			Alberta			Measure Evaluation		
			Current Result	Prev Year Result	Prev 3 Year Average	Current Result	Prev Year Result	Prev 3 Year Average	Achievement	Improvement	Overall
Safe and Caring Schools	Excellent	Safe and Caring	91.5	82.4	83.5	89.5	89.2	89.1	Very High	Improved Significantly	Excellent
Student Learning Opportunities	n/a	Program of Studies	91.1	91.5	89.6	81.9	81.3	81.4	Very High	Maintained	Excellent
		Education Quality	92.1	86.9	84.6	90.1	89.5	89.5	Very High	Improved Significantly	Excellent
		Drop Out Rate	0.0	0.4	0.1	3.2	3.5	3.5	Very High	Maintained	Excellent
		High School Completion Rate (3 yr)	n/a	n/a	n/a	76.5	76.5	75.5	n/a	n/a	n/a
Student Learning Achievement (Grades K-9)	Acceptable	PAT: Acceptable	74.9	67.6	71.1	73.6	72.9	73.4	Intermediate	Maintained	Acceptable
		PAT: Excellence	16.4	13.6	14.8	19.4	18.8	18.6	Intermediate	Maintained	Acceptable
Student Learning Achievement (Grades 10-12)	n/a	Diploma: Acceptable	n/a	n/a	n/a	85.0	85.2	85.1	n/a	n/a	n/a
		Diploma: Excellence	n/a	n/a	n/a	21.0	21.0	20.5	n/a	n/a	n/a
		Diploma Exam Participation Rate (4+ Exams)	n/a	n/a	n/a	54.6	54.4	53.5	n/a	n/a	n/a
		Rutherford Scholarship Eligibility Rate	n/a	n/a	n/a	60.8	n/a	n/a	n/a	n/a	n/a
Preparation for Lifelong Learning, World of Work, Citizenship	n/a	Transition Rate (6 yr)	n/a	n/a	n/a	59.4	59.7	59.3	n/a	n/a	n/a
		Work Preparation	85.6	79.1	72.5	82.6	82.0	81.1	High	Improved	Good
		Citizenship	86.7	77.6	76.9	83.9	83.5	83.4	Very High	Improved Significantly	Excellent
Parental Involvement	Excellent	Parental Involvement	87.5	79.4	77.0	80.9	80.7	80.5	Very High	Improved	Excellent
Continuous Improvement	Excellent	School Improvement	85.7	67.3	77.8	81.2	79.6	80.0	Very High	Improved Significantly	Excellent

Notes:

- Results have been adjusted to reflect the change from previous data source systems to Provincial Approach to Student Information (PASI).
- Due to the change from previous data source systems to Provincial Approach to Student Information (PASI), historical Rutherford Scholarship Eligibility Rate results are not available.
- Aggregated PAT results are based upon a weighted average of percent meeting standards (Acceptable, Excellence). The weights are the number of students enrolled in each course. Courses included: English Language Arts (Grades 6, 9, 9 KAE), Français (Grades 6, 9), French Language Arts (Grades 6, 9), Mathematics (6, 9, 9 KAE), Science (Grades 6, 9, 9 KAE), Social Studies (Grades 6, 9, 9 KAE).
- Aggregated Diploma results are a weighted average of percent meeting standards (Acceptable, Excellence) on Diploma Examinations. The weights are the number of students writing the Diploma Examination for each course. Courses included: English Language Arts 30-1, English Language Arts 30-2, French Language Arts 30-1, Français 30-1, Chemistry 30, Physics 30, Biology 30, Science 30, Social Studies 30-1, Social Studies 30-2.
- Overall evaluations can only be calculated if both improvement and achievement evaluations are available.
- Results for the ACOL measures are available in the detailed report: see "ACOL Measures" in the Table of Contents.
- Participation in Provincial Achievement Tests was impacted by the flooding in June 2013 (Grade 9 only) and by the fires in May to June 2016. Caution should be used when interpreting trends over time for the province and those school authorities affected by these events.
- Participation in Diploma Examinations was impacted by the flooding in June 2013 and by the fires in May to June 2016. Caution should be used when interpreting trends over time for the province and those school authorities affected by these events.
- Survey results for the province and school authorities were impacted by the changes in the number of students responding to the survey through the introduction of the OurSCHOOL/TTFM (Tell Them From Me) survey in 2014.
- Data values have been suppressed where the number of respondents/students is fewer than 6. Suppression is marked with an asterisk (*).

Measure Evaluation Reference

Achievement Evaluation

Achievement evaluation is based upon a comparison of Current Year data to a set of standards which remain consistent over time. The Standards are calculated by taking the 3 year average of baseline data for each measure across all school jurisdictions and calculating the 5th, 25th, 75th and 95th percentiles. Once calculated, these standards remain in place from year to year to allow for consistent planning and evaluation.

The table below shows the range of values defining the 5 achievement evaluation levels for each measure.

Measure	Very Low	Low	Intermediate	High	Very High
Safe and Caring	0.00 - 77.62	77.62 - 81.05	81.05 - 84.50	84.50 - 88.03	88.03 - 100.00
Program of Studies	0.00 - 66.31	66.31 - 72.65	72.65 - 78.43	78.43 - 81.59	81.59 - 100.00
Education Quality	0.00 - 80.94	80.94 - 84.23	84.23 - 87.23	87.23 - 89.60	89.60 - 100.00
Drop Out Rate	100.00 - 9.40	9.40 - 6.90	6.90 - 4.27	4.27 - 2.79	2.79 - 0.00
High School Completion Rate (3 yr)	0.00 - 57.03	57.03 - 62.36	62.36 - 73.88	73.88 - 81.79	81.79 - 100.00
PAT: Acceptable	0.00 - 66.07	66.07 - 70.32	70.32 - 79.81	79.81 - 84.64	84.64 - 100.00
PAT: Excellence	0.00 - 9.97	9.97 - 13.44	13.44 - 19.56	19.56 - 25.83	25.83 - 100.00
Diploma: Acceptable	0.00 - 73.77	73.77 - 80.97	80.97 - 86.66	86.66 - 90.29	90.29 - 100.00
Diploma: Excellence	0.00 - 7.14	7.14 - 13.15	13.15 - 19.74	19.74 - 24.05	24.05 - 100.00
Diploma Exam Participation Rate (4+ Exams)	0.00 - 31.10	31.10 - 44.11	44.11 - 55.78	55.78 - 65.99	65.99 - 100.00
Transition Rate (6 yr)	0.00 - 39.80	39.80 - 46.94	46.94 - 56.15	56.15 - 68.34	68.34 - 100.00
Work Preparation	0.00 - 66.92	66.92 - 72.78	72.78 - 77.78	77.78 - 86.13	86.13 - 100.00
Citizenship	0.00 - 66.30	66.30 - 71.63	71.63 - 77.50	77.50 - 81.08	81.08 - 100.00
Parental Involvement	0.00 - 70.76	70.76 - 74.58	74.58 - 78.50	78.50 - 82.30	82.30 - 100.00
School Improvement	0.00 - 65.25	65.25 - 70.85	70.85 - 76.28	76.28 - 80.41	80.41 - 100.00

Notes:

- 1) For all measures except Drop Out Rate: The range of values at each evaluation level is interpreted as greater than or equal to the lower value, and less than the higher value. For the Very High evaluation level, values range from greater than or equal to the lower value to 100%.
- 2) Drop Out Rate measure: As "Drop Out Rate" is inverse to most measures (i.e. lower values are "better"), the range of values at each evaluation level is interpreted as greater than the lower value and less than or equal to the higher value. For the Very High evaluation level, values range from 0% to less than or equal to the higher value.

Improvement Table

For each jurisdiction, improvement evaluation consists of comparing the Current Year result for each measure with the previous three-year average. A chi-square statistical test is used to determine the significance of the improvement. This test takes into account the size of the jurisdiction in the calculation to make improvement evaluation fair across jurisdictions of different sizes.

The table below shows the definition of the 5 improvement evaluation levels based upon the chi-square result.

Evaluation Category	Chi-Square Range
Declined Significantly	3.84 + (current < previous 3-year average)
Declined	1.00 - 3.83 (current < previous 3-year average)
Maintained	less than 1.00
Improved	1.00 - 3.83 (current > previous 3-year average)
Improved Significantly	3.84 + (current > previous 3-year average)

Overall Evaluation Table

The overall evaluation combines the Achievement Evaluation and the Improvement Evaluation. The table below illustrates how the Achievement and Improvement evaluations are combined to get the overall evaluation.

Improvement	Achievement				
	Very High	High	Intermediate	Low	Very Low
Improved Significantly	Excellent	Good	Good	Good	Acceptable
Improved	Excellent	Good	Good	Acceptable	Issue
Maintained	Excellent	Good	Acceptable	Issue	Concern
Declined	Good	Acceptable	Issue	Issue	Concern
Declined Significantly	Acceptable	Issue	Issue	Concern	Concern

Category Evaluation

The category evaluation is an average of the Overall Evaluation of the measures that make up the category. For the purpose of the calculation, consider an Overall Evaluation of Excellent to be 2, Good to be 1, Acceptable to be 0, Issue to be -1, and Concern to be -2. The simple average (mean) of these values rounded to the nearest integer produces the Category Evaluation value. This is converted back to a colour using the same scale above (e.g. 2=Excellent, 1=Good, 0=Intermediate, -1=Issue, -2=Concern)

Outcome One: Alberta's students are successful

Performance Measure	Results (in percentages)					Target	Evaluation			Targets		
	2012	2013	2014	2015	2016	2016	Achievement	Improvement	Overall	2017	2018	2019
Overall percentage of students in Grades 6 and 9 who achieved the acceptable standard on Provincial Achievement Tests (overall cohort results).	73.0	72.5	73.1	67.6	74.9		Intermediate	Maintained	Acceptable			
Overall percentage of students in Grades 6 and 9 who achieved the standard of excellence on Provincial Achievement Tests (overall cohort results).	13.8	17.7	13.2	13.6	16.4		Intermediate	Maintained	Acceptable			

Comment on Results
(an assessment of progress toward achieving the target)

Strategies

- Notes:
1. Results have been adjusted to reflect the change from previous data source systems to Provincial Approach to Student Information (PASI).
 2. Aggregated PAT results are based upon a weighted average of percent meeting standards (Acceptable, Excellence). The weights are the number of students enrolled in each course. Courses included: English Language Arts (Grades 6, 9, 9 KAE), Français (Grades 6, 9), French Language Arts (Grades 6, 9), Mathematics (6, 9, 9 KAE), Science (Grades 6, 9, 9 KAE), Social Studies (Grades 6, 9, 9 KAE).
 3. Participation in Provincial Achievement Tests was impacted by the flooding in June 2013 (Grade 9 only) and by the fires in May to June 2016. Caution should be used when interpreting trends over time for the province and those school authorities affected by these events.
 4. Data values have been suppressed where the number of respondents/students is fewer than 6. Suppression is marked with an asterisk (*).

Outcome One: Alberta's students are successful (continued)

[No Data for Diploma Exam Results]

Performance Measure	Results (in percentages)					Target	Evaluation			Targets		
	2011	2012	2013	2014	2015	2016	Achievement	Improvement	Overall	2017	2018	2019
High School Completion Rate - Percentage of students who completed high school within three years of entering Grade 10.	n/a	n/a	n/a	n/a	n/a		n/a	n/a	n/a			
Drop Out Rate - annual dropout rate of students aged 14 to 18	0.5	0.0	0.0	0.4	0.0		Very High	Maintained	Excellent			
High school to post-secondary transition rate of students within six years of entering Grade 10.	n/a	n/a	n/a	n/a	n/a		n/a	n/a	n/a			
Percentage of Grade 12 students eligible for a Rutherford Scholarship.	n/a	n/a	n/a	n/a	n/a		n/a	n/a	n/a			
Percentage of students writing four or more diploma exams within three years of entering Grade 10.	n/a	n/a	n/a	n/a	n/a		n/a	n/a	n/a			

Comment on Results
(an assessment of progress toward achieving the target)

Strategies

- Notes:
1. Results have been adjusted to reflect the change from previous data source systems to Provincial Approach to Student Information (PASI).
 2. Due to the change from previous data source systems to Provincial Approach to Student Information (PASI), historical Rutherford Scholarship Eligibility Rate results are not available.
 3. Aggregated Diploma results are a weighted average of percent meeting standards (Acceptable, Excellence) on Diploma Examinations. The weights are the number of students writing the Diploma Examination for each course. Courses included: English Language Arts 30-1, English Language Arts 30-2, French Language Arts 30-1, Français 30-1, Chemistry 30, Physics 30, Biology 30, Science 30, Social Studies 30-1, Social Studies 30-2.
 4. Diploma Examination Participation, High School Completion and High school to Post-secondary Transition rates are based upon a cohort of grade 10 students who are tracked over time.
 5. Participation in Diploma Examinations was impacted by the flooding in June 2013 and by the fires in May to June 2016. Caution should be used when interpreting trends over time for the province and those school authorities affected by these events.
 6. Data values have been suppressed where the number of respondents/students is fewer than 6. Suppression is marked with an asterisk (*).

Outcome One: Alberta's students are successful (continued)

Performance Measure	Results (in percentages)					Target	Evaluation			Targets		
	2012	2013	2014	2015	2016	2016	Achievement	Improvement	Overall	2017	2018	2019
Percentage of teachers, parents and students who are satisfied that students model the characteristics of active citizenship.	75.3	77.5	75.6	77.6	86.7		Very High	Improved Significantly	Excellent			
Percentage of teachers and parents who agree that students are taught attitudes and behaviours that will make them successful at work when they finish school.	64.6	65.1	73.3	79.1	85.6		High	Improved	Good			

<p>Comment on Results <i>(an assessment of progress toward achieving the target)</i></p>
<p>Strategies</p>

- Notes:
1. Survey results for the province and some school authorities were impacted by changes in the number of students responding to the survey through the introduction of the Tell THEM From ME survey tool in 2014.
 2. Data values have been suppressed where the number of respondents/students is fewer than 6. Suppression is marked with an asterisk (*).

Outcome Two: The achievement gap between First Nations, Métis, and Inuit students and all other students is eliminated

(Results and evaluations for FNMI measures are required for Public/Separate/Francophone schools only)

Performance Measure	Results (in percentages)					Target	Evaluation			Targets		
	2012	2013	2014	2015	2016	2016	Achievement	Improvement	Overall	2017	2018	2019
Overall percentage of self-identified FNMI students in Grades 6 and 9 who achieved the acceptable standard on Provincial Achievement Tests (overall cohort results).	60.2	36.4	60.9	55.0	49.4		Very Low	Maintained	Concern			
Overall percentage of self-identified FNMI students in Grades 6 and 9 who achieved the standard of excellence on Provincial Achievement Tests (overall cohort results).	8.2	6.8	2.3	9.2	1.1		Very Low	Maintained	Concern			
Overall percentage of self-identified FNMI students who achieved the acceptable standard on diploma examinations (overall results).	n/a	n/a	n/a	n/a	n/a		n/a	n/a	n/a			
Overall percentage of self-identified FNMI students who achieved the standard of excellence on diploma examinations (overall results).	n/a	n/a	n/a	n/a	n/a		n/a	n/a	n/a			

Comment on Results

(an assessment of progress toward achieving the target)

Strategies

Notes:

- Results have been adjusted to reflect the change from previous data source systems to Provincial Approach to Student Information (PASI).
- Aggregated PAT results are based upon a weighted average of percent meeting standards (Acceptable, Excellence). The weights are the number of students enrolled in each course. Courses included: English Language Arts (Grades 6, 9, 9 KAE), Français (Grades 6, 9), Français (Grades 6, 9), French Language Arts (Grades 6, 9), Mathematics (6, 9, 9 KAE), Science (Grades 6, 9, 9 KAE), Social Studies (Grades 6, 9, 9 KAE).
- Aggregated Diploma results are a weighted average of percent meeting standards (Acceptable, Excellence) on Diploma Examinations. The weights are the number of students writing the Diploma Examination for each course. Courses included: English Language Arts 30-1, English Language Arts 30-2, French Language Arts 30-1, Français 30-1, Chemistry 30, Physics 30, Biology 30, Science 30, Social Studies 30-1, Social Studies 30-2.
- Diploma Examination Participation, High School Completion and High school to Post-secondary Transition rates are based upon a cohort of grade 10 students who are tracked over time.
- Participation in Provincial Achievement Tests was impacted by the flooding in June 2013 (Grade 9 only) and by the fires in May to June 2016. Caution should be used when interpreting trends over time for the province and those school authorities affected by these events.
- Data values have been suppressed where the number of respondents/students is fewer than 6. Suppression is marked with an asterisk (*).

Outcome Two: *The achievement gap between First Nations, Métis, and Inuit students and all other students is eliminated (continued)*

Performance Measure	Results (in percentages)					Target	Evaluation			Targets		
	2011	2012	2013	2014	2015	2016	Achievement	Improvement	Overall	2017	2018	2019
High School Completion Rate - Percentage of self-identified FNMI students who completed high school within three years of entering Grade 10.	n/a	n/a	n/a	n/a	n/a		n/a	n/a	n/a			
Drop Out Rate - annual dropout rate of self-identified FNMI students aged 14 to 18	0.0	0.0	0.0	0.0	0.0		Very High	Maintained	Excellent			
High school to post-secondary transition rate of self-identified FNMI students within six years of entering Grade 10.	n/a	n/a	n/a	n/a	n/a		n/a	n/a	n/a			
Percentage of Grade 12 self-identified FNMI students eligible for a Rutherford Scholarship.	n/a	n/a	n/a	n/a	n/a		n/a	n/a	n/a			
Percentage of self-identified FNMI students writing four or more diploma exams within three years of entering Grade 10.	n/a	n/a	n/a	n/a	n/a		n/a	n/a	n/a			

Comment on Results

(an assessment of progress toward achieving the target)

Strategies

Notes:

1. Results have been adjusted to reflect the change from previous data source systems to Provincial Approach to Student Information (PASI).
2. Due to the change from previous data source systems to Provincial Approach to Student Information (PASI), historical Rutherford Scholarship Eligibility Rate results are not available.
3. Diploma Examination Participation, High School Completion and High school to Post-secondary Transition rates are based upon a cohort of grade 10 students who are tracked over time.
4. Data values have been suppressed where the number of respondents/students is fewer than 6. Suppression is marked with an asterisk (*).

Outcome Three: Alberta's education system is inclusive

Performance Measure	Results (in percentages)					Target	Evaluation			Targets		
	2012	2013	2014	2015	2016	2016	Achievement	Improvement	Overall	2017	2018	2019
Percentage of teacher, parent and student agreement that: students are safe at school, are learning the importance of caring for others, are learning respect for others and are treated fairly in school.	85.0	85.3	82.9	82.4	91.5		Very High	Improved Significantly	Excellent			

Comment on Results
(an assessment of progress toward achieving the target)

Strategies

- Notes:
1. Survey results for the province and some school authorities were impacted by changes in the number of students responding to the survey through the introduction of the Tell THEM From ME survey tool in 2014.
 2. Data values have been suppressed where the number of respondents/students is fewer than 6. Suppression is marked with an asterisk (*).

Outcome Four: Alberta has excellent teachers, school and school authority leaders

Performance Measure	Results (in percentages)					Target	Evaluation			Targets		
	2012	2013	2014	2015	2016	2016	Achievement	Improvement	Overall	2017	2018	2019
Percentage of teachers, parents and students satisfied with the opportunity for students to receive a broad program of studies including fine arts, career, technology, and health and physical education.	83.8	91.6	85.6	91.5	91.1		Very High	Maintained	Excellent			

Comment on Results
(an assessment of progress toward achieving the target)

Strategies

- Notes:
1. Survey results for the province and some school authorities were impacted by changes in the number of students responding to the survey through the introduction of the Tell THEM From ME survey tool in 2014.
 2. Data values have been suppressed where the number of respondents/students is fewer than 6. Suppression is marked with an asterisk (*).

Outcome Five: The education system is well governed and managed

Performance Measure	Results (in percentages)					Target	Evaluation			Targets		
	2012	2013	2014	2015	2016	2016	Achievement	Improvement	Overall	2017	2018	2019
Percentage of teachers, parents and students indicating that their school and schools in their jurisdiction have improved or stayed the same the last three years.	84.6	85.5	80.6	67.3	85.7		Very High	Improved Significantly	Excellent			
Percentage of teachers and parents satisfied with parental involvement in decisions about their child's education.	79.6	77.3	74.2	79.4	87.5		Very High	Improved	Excellent			
Percentage of teachers, parents and students satisfied with the overall quality of basic education.	85.5	85.6	81.3	86.9	92.1		Very High	Improved Significantly	Excellent			

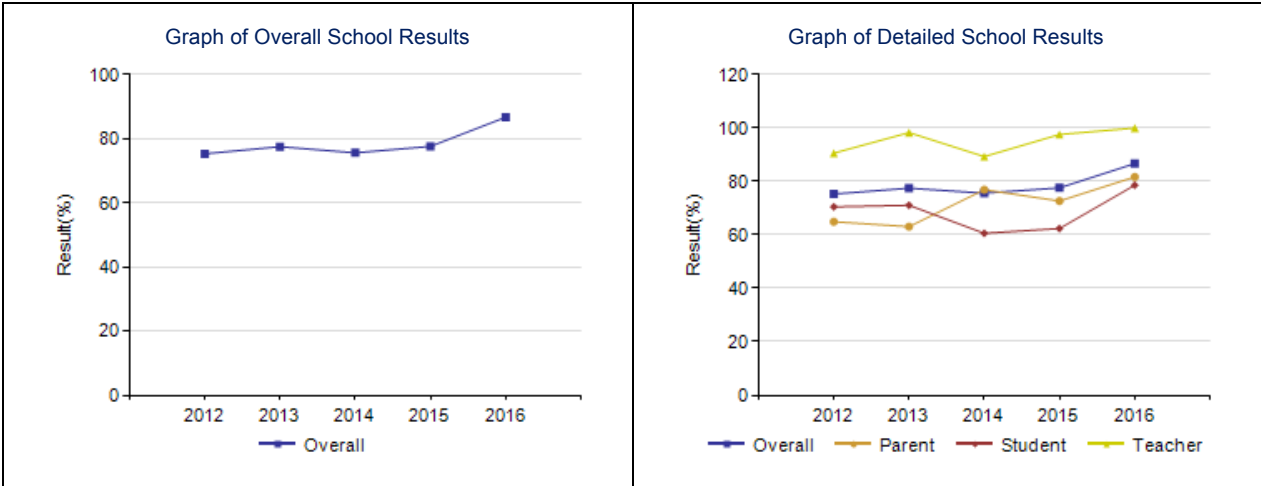
Comment on Results
(an assessment of progress toward achieving the target)

Strategies

- Notes:
1. Survey results for the province and some school authorities were impacted by changes in the number of students responding to the survey through the introduction of the Tell THEM From ME survey tool in 2014.
 2. Data values have been suppressed where the number of respondents/students is fewer than 6. Suppression is marked with an asterisk (*).

Citizenship – Measure Details

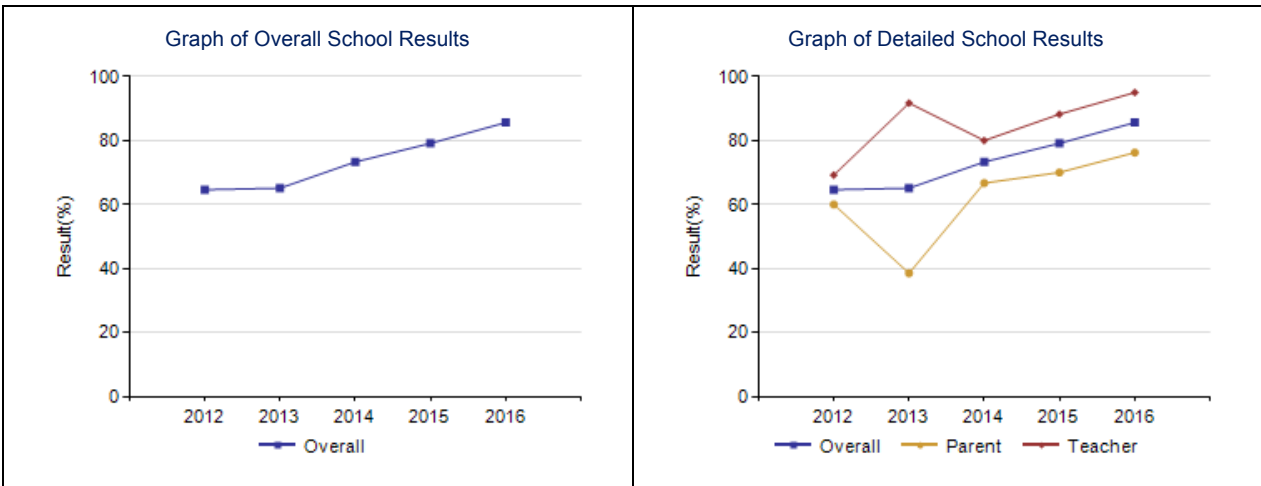
Percentage of teachers, parents and students who are satisfied that students model the characteristics of active citizenship.															
	School					Authority					Province				
	2012	2013	2014	2015	2016	2012	2013	2014	2015	2016	2012	2013	2014	2015	2016
Overall	75.3	77.5	75.6	77.6	86.7	82.7	85.1	85.4	85.3	85.8	82.5	83.4	83.4	83.5	83.9
Teacher	90.6	98.3	89.3	97.6	100.0	96.8	97.4	96.8	98.4	98.4	93.1	93.6	93.8	94.2	94.5
Parent	64.9	63.1	76.9	72.7	81.7	78.2	79.1	85.5	83.2	82.9	79.4	80.3	81.9	82.1	82.9
Student	70.5	71.1	60.6	62.4	78.6	73.1	78.6	73.9	74.2	76.1	75.0	76.2	74.5	74.2	74.5



- Notes:
1. Survey results for the province and some school authorities were impacted by changes in the number of students responding to the survey through the introduction of the Tell THEM From ME survey tool in 2014.
 2. Data values have been suppressed where the number of respondents/students is fewer than 6. Suppression is marked with an asterisk (*).

Work Preparation – Measure Details

Percentage of teachers and parents who agree that students are taught attitudes and behaviours that will make them successful at work when they finish school.															
	School					Authority					Province				
	2012	2013	2014	2015	2016	2012	2013	2014	2015	2016	2012	2013	2014	2015	2016
Overall	64.6	65.1	73.3	79.1	85.6	81.4	80.5	84.5	82.1	83.3	79.7	80.3	81.2	82.0	82.6
Teacher	69.2	91.7	80.0	88.2	95.0	93.0	94.4	92.8	92.0	91.7	89.5	89.4	89.3	89.7	90.5
Parent	60.0	38.5	66.7	70.0	76.2	69.9	66.7	76.2	72.1	74.9	69.9	71.1	73.1	74.2	74.8



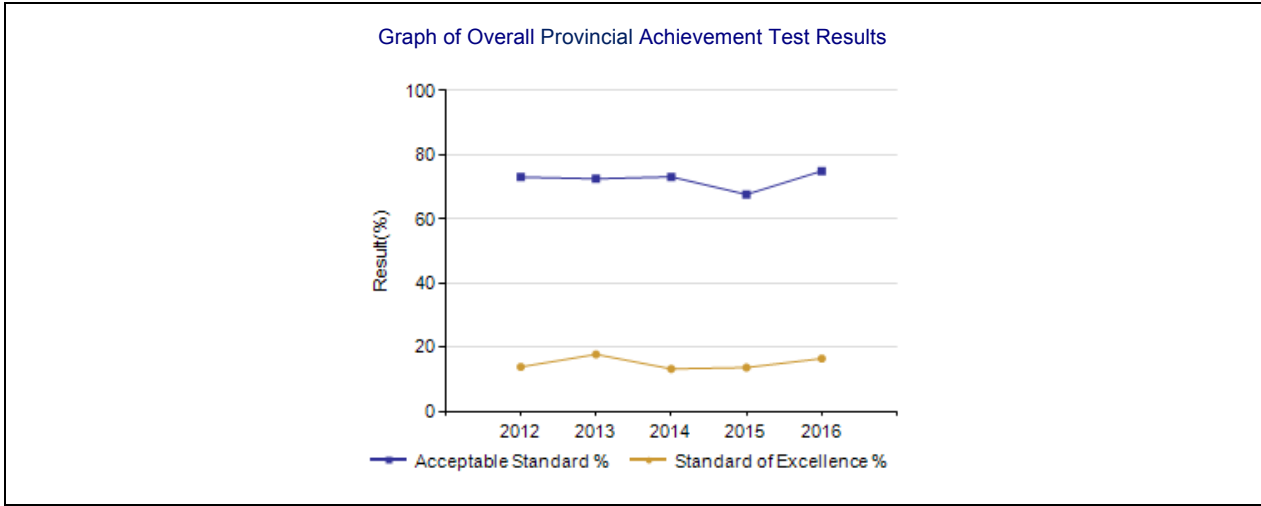
- Notes:
1. Data values have been suppressed where the number of respondents/students is fewer than 6. Suppression is marked with an asterisk (*).

Provincial Achievement Test Results – Measure Details

PAT Course by Course Results by Number Enrolled.													
		Results (in percentages)										Target	
		2012		2013		2014		2015		2016		2016	
		A	E	A	E	A	E	A	E	A	E	A	E
English Language Arts 6	School	n/a	n/a	n/a	n/a	n/a	n/a	n/a	n/a	n/a	n/a		
	Authority	84.4	16.6	75.7	13.6	79.5	16.8	82.0	14.9	83.9	19.9		
	Province	82.7	17.8	82.5	16.3	81.9	17.6	82.8	19.5	82.9	20.4		
French Language Arts 6	School	n/a	n/a	n/a	n/a	n/a	n/a	n/a	n/a	n/a	n/a		
	Authority	81.5	11.1	96.3	14.8	96.0	28.0	91.4	11.4	93.3	30.0		
	Province	89.3	17.3	88.6	16.3	88.0	15.6	87.5	13.6	87.7	14.2		
Français 6	School	n/a	n/a	n/a	n/a	n/a	n/a	n/a	n/a	n/a	n/a		
	Authority	n/a	n/a	n/a	n/a	n/a	n/a	n/a	n/a	n/a	n/a		
	Province	91.0	21.9	94.0	21.6	90.6	17.1	89.0	15.0	91.4	17.2		
Mathematics 6	School	n/a	n/a	n/a	n/a	n/a	n/a	n/a	n/a	n/a	n/a		
	Authority	68.8	11.4	59.3	10.2	66.2	9.2	67.9	9.4	68.2	9.2		
	Province	74.7	16.6	73.0	16.4	73.5	15.4	73.2	14.1	72.2	14.0		
Science 6	School	n/a	n/a	n/a	n/a	n/a	n/a	n/a	n/a	n/a	n/a		
	Authority	74.4	20.1	68.6	15.3	66.8	16.8	71.3	15.4	75.3	15.8		
	Province	77.8	28.2	77.5	25.9	75.9	24.9	76.3	25.3	78.0	27.1		
Social Studies 6	School	n/a	n/a	n/a	n/a	n/a	n/a	n/a	n/a	n/a	n/a		
	Authority	70.1	18.2	60.3	12.5	60.4	9.2	61.9	11.7	66.1	11.9		
	Province	73.2	19.5	72.7	19.0	70.4	16.6	69.8	18.1	71.4	22.0		
English Language Arts 9	School	81.0	14.8	81.2	13.6	77.2	9.4	71.2	12.0	79.9	12.3		
	Authority	81.8	18.6	84.1	15.6	79.0	11.3	74.7	13.3	78.1	12.5		
	Province	77.4	16.4	76.7	14.8	76.3	15.0	75.6	14.4	77.0	15.2		
English Lang Arts 9 KAE	School	80.0	6.7	56.3	0.0	84.2	0.0	83.3	11.1	84.2	21.1		
	Authority	67.9	10.7	75.7	10.8	91.4	5.7	88.9	25.9	77.4	25.8		
	Province	61.4	5.8	62.4	4.3	62.8	3.5	63.0	4.5	59.8	6.2		
French Language Arts 9	School	79.2	12.5	95.2	14.3	84.0	20.0	94.1	17.6	85.7	33.3		
	Authority	79.2	12.5	95.2	14.3	84.0	20.0	94.1	17.6	85.7	33.3		
	Province	87.5	12.2	87.2	13.9	86.5	11.1	85.8	10.1	83.0	10.8		
Français 9	School	n/a	n/a	n/a	n/a	n/a	n/a	n/a	n/a	n/a	n/a		
	Authority	n/a	n/a	n/a	n/a	n/a	n/a	n/a	n/a	n/a	n/a		
	Province	84.6	16.1	84.0	14.5	86.1	17.8	88.5	20.2	86.4	26.8		
Mathematics 9	School	59.2	8.5	69.5	14.9	66.3	9.6	57.6	11.9	70.1	12.3		
	Authority	65.0	15.4	70.9	18.3	68.9	9.4	61.8	15.0	67.0	14.9		
	Province	66.4	17.8	66.8	18.3	67.1	17.3	65.3	17.9	67.8	17.5		
Mathematics 9 KAE	School	66.7	20.0	31.3	6.3	66.7	4.8	72.0	24.0	73.7	21.1		
	Authority	65.4	23.1	69.2	17.9	72.2	11.1	75.0	31.3	74.3	34.3		
	Province	62.5	15.3	65.8	14.7	63.4	14.5	60.9	14.4	61.2	13.0		
Science 9	School	78.9	16.9	74.7	26.0	79.8	22.5	71.5	13.8	77.9	20.8		
	Authority	78.6	22.1	79.0	23.6	78.6	21.7	77.4	22.6	75.9	21.9		
	Province	74.1	22.4	72.9	20.0	73.2	22.1	74.1	22.8	74.2	22.4		
Science 9 KAE	School	86.7	20.0	31.3	0.0	66.7	9.5	50.0	5.0	63.2	10.5		
	Authority	85.7	19.0	54.8	9.7	77.8	25.0	65.5	10.3	61.5	23.1		
	Province	67.9	17.3	68.4	17.1	64.1	14.9	64.5	15.1	63.8	14.3		
Social Studies 9	School	69.7	14.8	76.6	23.4	68.0	13.3	65.9	15.9	71.4	16.9		
	Authority	70.8	19.9	75.2	24.1	70.0	15.2	71.1	21.5	69.1	17.6		
	Province	68.9	19.1	65.5	18.8	65.5	19.9	65.1	19.8	64.7	18.0		
Social Studies 9 KAE	School	80.0	13.3	25.0	0.0	72.2	11.1	66.7	11.1	68.4	21.1		
	Authority	81.0	14.3	57.6	15.2	81.3	12.5	79.3	13.8	69.2	26.9		
	Province	63.5	13.9	64.6	13.0	61.8	10.7	57.3	11.2	58.0	11.6		

Notes:

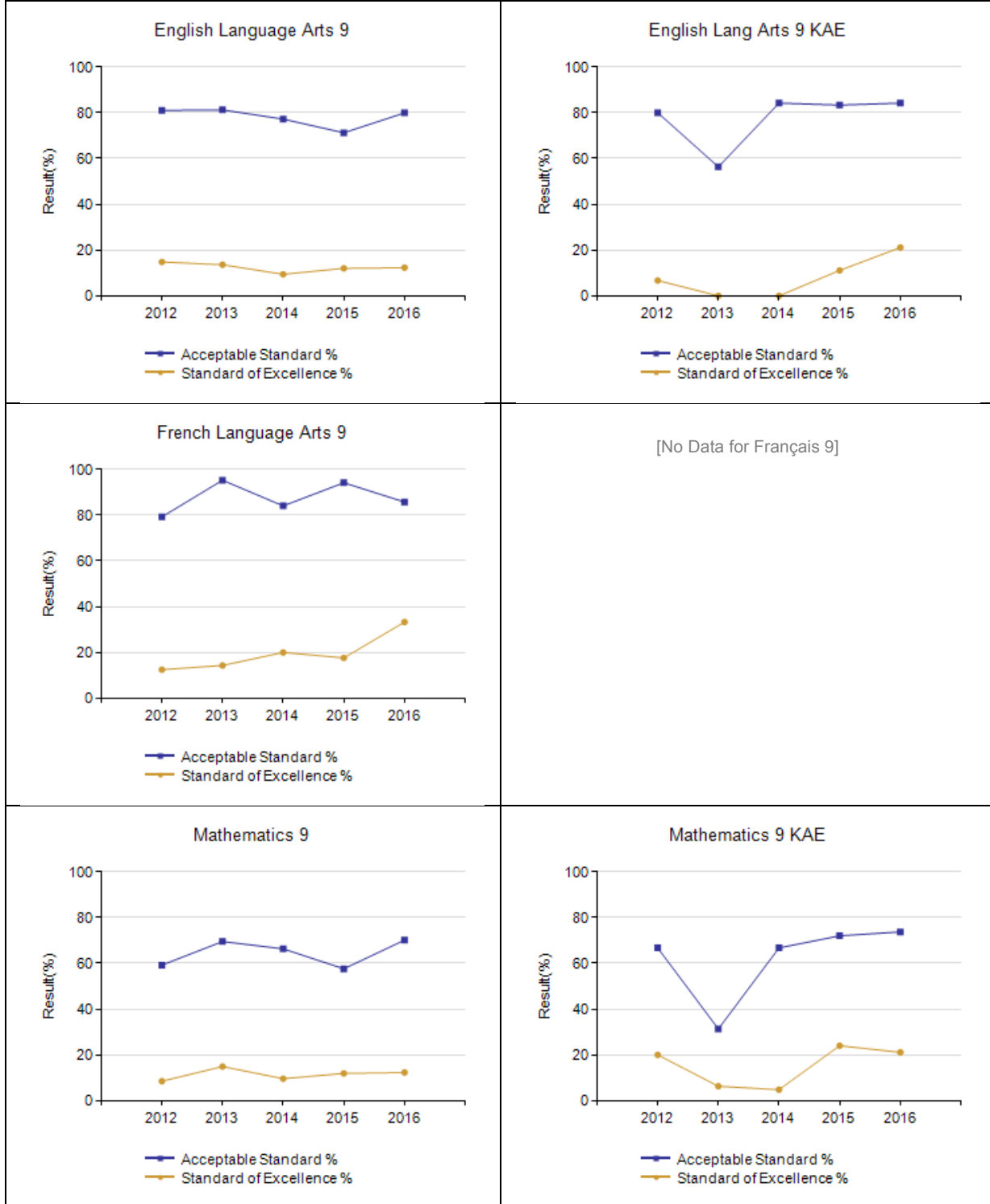
1. Results have been adjusted to reflect the change from previous data source systems to Provincial Approach to Student Information (PASI).
2. "A" = Acceptable; "E" = Excellence — the percentages achieving the acceptable standard include the percentages achieving the standard of excellence.
3. Participation in Provincial Achievement Tests was impacted by the flooding in June 2013 (Grade 9 only) and by the fires in May to June 2016. Caution should be used when interpreting trends over time for the province and those school authorities affected by these events.
4. Data values have been suppressed where the number of respondents/students is fewer than 6. Suppression is marked with an asterisk (*).



Notes:

1. Results have been adjusted to reflect the change from previous data source systems to Provincial Approach to Student Information (PASI).
2. Participation in Provincial Achievement Tests was impacted by the flooding in June 2013 (Grade 9 only) and by the fires in May to June 2016. Caution should be used when interpreting trends over time for the province and those school authorities affected by these events.
3. Data values have been suppressed where the number of respondents/students is fewer than 6. Suppression is marked with an asterisk (*).

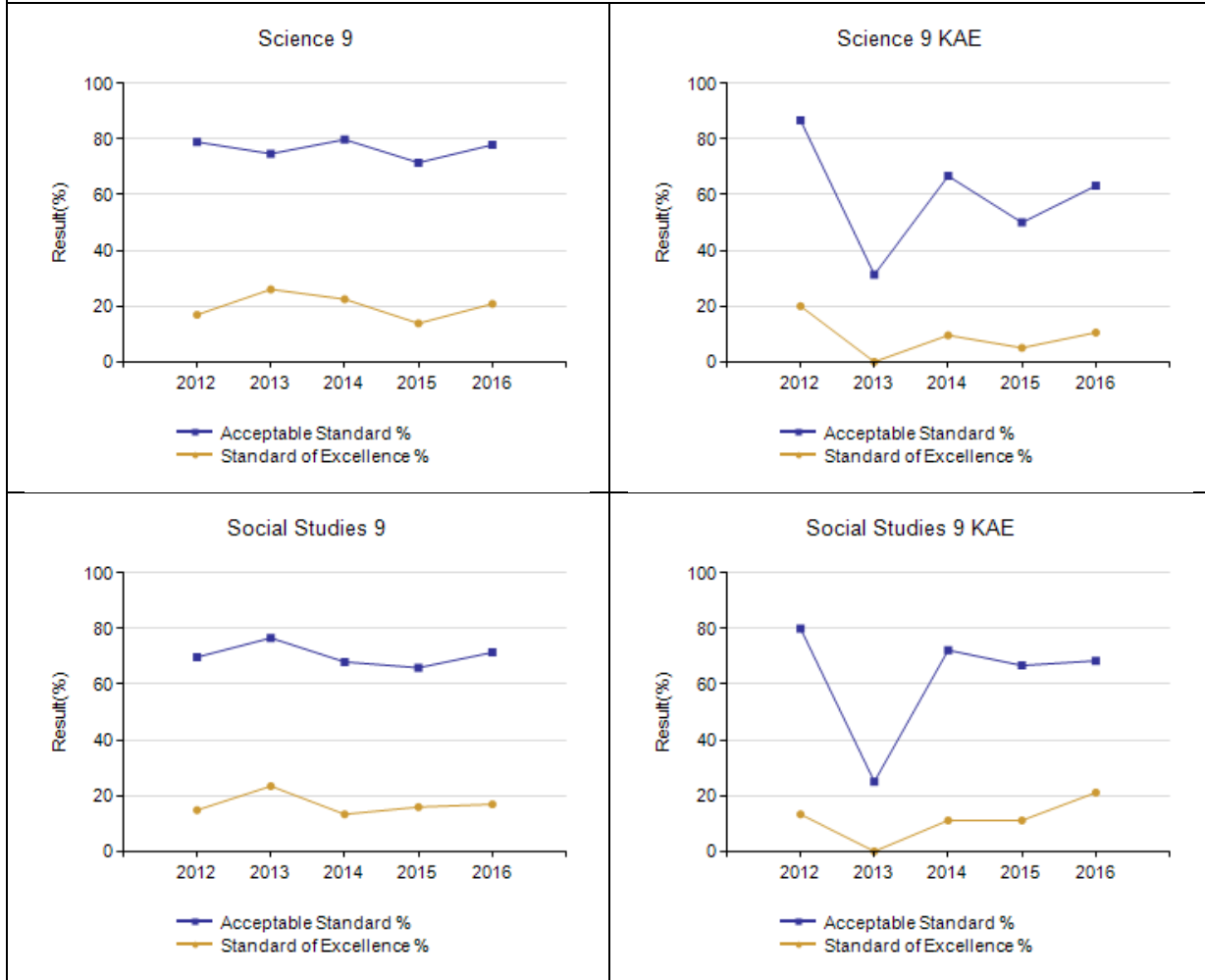
Graph of Provincial Achievement Test Results by Course



Notes:

1. Results have been adjusted to reflect the change from previous data source systems to Provincial Approach to Student Information (PASI).
2. Participation in Provincial Achievement Tests was impacted by the flooding in June 2013 (Grade 9 only) and by the fires in May to June 2016. Caution should be used when interpreting trends over time for the province and those school authorities affected by these events.
3. Data values have been suppressed where the number of respondents/students is fewer than 6. Suppression is marked with an asterisk (*).

Graph of Provincial Achievement Test Results by Course



Notes:

1. Results have been adjusted to reflect the change from previous data source systems to Provincial Approach to Student Information (PASI).
2. Participation in Provincial Achievement Tests was impacted by the flooding in June 2013 (Grade 9 only) and by the fires in May to June 2016. Caution should be used when interpreting trends over time for the province and those school authorities affected by these events.
3. Data values have been suppressed where the number of respondents/students is fewer than 6. Suppression is marked with an asterisk (*).

PAT Results Course By Course Summary By Enrolled With Measure Evaluation

		St. Francis Junior High School							Alberta			
		Achievement	Improvement	Overall	2016		Prev 3 Year Average		2016		Prev 3 Year Average	
Course	Measure				N	%	N	%	N	%	N	%
English Language Arts 6	Acceptable Standard	n/a	n/a	n/a	n/a	n/a	n/a	n/a	47,606	82.9	45,843	82.4
	Standard of Excellence	n/a	n/a	n/a	n/a	n/a	n/a	n/a	47,606	20.4	45,843	17.8
French Language Arts 6	Acceptable Standard	n/a	n/a	n/a	n/a	n/a	n/a	n/a	2,854	87.7	2,780	88.0
	Standard of Excellence	n/a	n/a	n/a	n/a	n/a	n/a	n/a	2,854	14.2	2,780	15.1
Français 6	Acceptable Standard	n/a	n/a	n/a	n/a	n/a	n/a	n/a	569	91.4	500	91.2
	Standard of Excellence	n/a	n/a	n/a	n/a	n/a	n/a	n/a	569	17.2	500	17.9
Mathematics 6	Acceptable Standard	n/a	n/a	n/a	n/a	n/a	n/a	n/a	47,512	72.2	45,774	73.2
	Standard of Excellence	n/a	n/a	n/a	n/a	n/a	n/a	n/a	47,512	14.0	45,774	15.3
Science 6	Acceptable Standard	n/a	n/a	n/a	n/a	n/a	n/a	n/a	47,543	78.0	45,788	76.6
	Standard of Excellence	n/a	n/a	n/a	n/a	n/a	n/a	n/a	47,543	27.1	45,788	25.3
Social Studies 6	Acceptable Standard	n/a	n/a	n/a	n/a	n/a	n/a	n/a	47,522	71.4	45,710	71.0
	Standard of Excellence	n/a	n/a	n/a	n/a	n/a	n/a	n/a	47,522	22.0	45,710	17.9
English Language Arts 9	Acceptable Standard	Intermediate	Maintained	Acceptable	154	79.9	153	76.5	43,780	77.0	38,487	76.2
	Standard of Excellence	Intermediate	Maintained	Acceptable	154	12.3	153	11.7	43,780	15.2	38,487	14.8
English Lang Arts 9 KAE	Acceptable Standard	High	Maintained	Good	19	84.2	18	74.6	1,638	59.8	1,514	62.7
	Standard of Excellence	Very High	Improved	Excellent	19	21.1	18	3.7	1,638	6.2	1,514	4.1
French Language Arts 9	Acceptable Standard	Intermediate	Maintained	Acceptable	21	85.7	21	91.1	2,611	83.0	2,584	86.5
	Standard of Excellence	Very High	Improved	Excellent	21	33.3	21	17.3	2,611	10.8	2,584	11.7
Français 9	Acceptable Standard	n/a	n/a	n/a	n/a	n/a	n/a	n/a	403	86.4	372	86.2
	Standard of Excellence	n/a	n/a	n/a	n/a	n/a	n/a	n/a	403	26.8	372	17.5
Mathematics 9	Acceptable Standard	Intermediate	Improved	Good	154	70.1	150	64.5	43,253	67.8	38,217	66.4
	Standard of Excellence	Low	Maintained	Issue	154	12.3	150	12.1	43,253	17.5	38,217	17.8
Mathematics 9 KAE	Acceptable Standard	Intermediate	Improved	Good	19	73.7	21	56.6	2,125	61.2	1,872	63.4
	Standard of Excellence	High	Maintained	Good	19	21.1	21	11.7	2,125	13.0	1,872	14.6
Science 9	Acceptable Standard	Very High	Maintained	Excellent	154	77.9	152	75.3	43,834	74.2	38,760	73.4
	Standard of Excellence	Very High	Maintained	Excellent	154	20.8	152	20.8	43,834	22.4	38,760	21.6
Science 9 KAE	Acceptable Standard	Intermediate	Maintained	Acceptable	19	63.2	19	49.3	1,591	63.8	1,492	65.7
	Standard of Excellence	Intermediate	Maintained	Acceptable	19	10.5	19	4.8	1,591	14.3	1,492	15.7
Social Studies 9	Acceptable Standard	Intermediate	Maintained	Acceptable	154	71.4	154	70.2	43,775	64.7	38,759	65.4
	Standard of Excellence	Intermediate	Maintained	Acceptable	154	16.9	154	17.5	43,775	18.0	38,759	19.5
Social Studies 9 KAE	Acceptable Standard	Intermediate	Maintained	Acceptable	19	68.4	17	54.6	1,608	58.0	1,454	61.2
	Standard of Excellence	High	Improved	Good	19	21.1	17	7.4	1,608	11.6	1,454	11.6

Notes:

1. Results have been adjusted to reflect the change from previous data source systems to Provincial Approach to Student Information (PAS).
2. Achievement Evaluation is not calculated for courses that do not have sufficient data available, either due to too few jurisdictions offering the course or because of changes in tests.
3. Participation in Provincial Achievement Tests was impacted by the flooding in June 2013 (Grade 9 only) and by the fires in May to June 2016. Caution should be used when interpreting trends over time for the province and those school authorities affected by these events.
4. Data values have been suppressed where the number of respondents/students is fewer than 6. Suppression is marked with an asterisk (*).

Measure Evaluation Reference - Achievement Evaluation

Achievement evaluation is based upon a comparison of Current Year data to a set of standards which remain consistent over time. The Standards are calculated by taking the 3 year average of baseline data for each measure across all school jurisdictions and calculating the 5th, 25th, 75th, and 95th percentiles. Once calculated, these standards remain in place from year to year to allow for consistent planning and evaluation.

The table below shows the range of values defining the 5 achievement evaluation levels for each measure.

Course	Measure	Very Low	Low	Intermediate	High	Very High
English Language Arts 6	Acceptable Standard	0.00 - 67.95	67.95 - 78.40	78.40 - 86.09	86.09 - 91.37	91.37 - 100.00
	Standard of Excellence	0.00 - 6.83	6.83 - 11.65	11.65 - 17.36	17.36 - 22.46	22.46 - 100.00
French Language Arts 6	Acceptable Standard	0.00 - 41.69	41.69 - 73.54	73.54 - 92.32	92.32 - 97.93	97.93 - 100.00
	Standard of Excellence	0.00 - 2.72	2.72 - 8.13	8.13 - 15.29	15.29 - 23.86	23.86 - 100.00
Mathematics 6	Acceptable Standard	0.00 - 63.91	63.91 - 70.73	70.73 - 79.61	79.61 - 88.67	88.67 - 100.00
	Standard of Excellence	0.00 - 8.53	8.53 - 11.31	11.31 - 18.13	18.13 - 25.17	25.17 - 100.00
Science 6	Acceptable Standard	0.00 - 60.36	60.36 - 78.51	78.51 - 86.46	86.46 - 90.64	90.64 - 100.00
	Standard of Excellence	0.00 - 11.74	11.74 - 17.42	17.42 - 25.34	25.34 - 34.31	34.31 - 100.00
Social Studies 6	Acceptable Standard	0.00 - 58.97	58.97 - 68.15	68.15 - 76.62	76.62 - 83.55	83.55 - 100.00
	Standard of Excellence	0.00 - 7.30	7.30 - 12.45	12.45 - 19.08	19.08 - 30.09	30.09 - 100.00
English Language Arts 9	Acceptable Standard	0.00 - 63.55	63.55 - 75.66	75.66 - 83.70	83.70 - 90.27	90.27 - 100.00
	Standard of Excellence	0.00 - 5.96	5.96 - 9.43	9.43 - 14.72	14.72 - 20.46	20.46 - 100.00
English Lang Arts 9 KAE	Acceptable Standard	0.00 - 29.97	29.97 - 53.86	53.86 - 76.19	76.19 - 91.85	91.85 - 100.00
	Standard of Excellence	0.00 - 0.00	0.00 - 0.30	0.30 - 10.00	10.00 - 20.31	20.31 - 100.00
French Language Arts 9	Acceptable Standard	0.00 - 67.59	67.59 - 81.33	81.33 - 92.06	92.06 - 97.26	97.26 - 100.00
	Standard of Excellence	0.00 - 1.67	1.67 - 6.81	6.81 - 17.11	17.11 - 28.68	28.68 - 100.00
Mathematics 9	Acceptable Standard	0.00 - 52.42	52.42 - 60.73	60.73 - 73.88	73.88 - 78.00	78.00 - 100.00
	Standard of Excellence	0.00 - 8.18	8.18 - 12.49	12.49 - 18.10	18.10 - 24.07	24.07 - 100.00
Mathematics 9 KAE	Acceptable Standard	0.00 - 28.14	28.14 - 53.85	53.85 - 75.83	75.83 - 94.44	94.44 - 100.00
	Standard of Excellence	0.00 - 0.00	0.00 - 6.07	6.07 - 20.43	20.43 - 31.67	31.67 - 100.00
Science 9	Acceptable Standard	0.00 - 50.57	50.57 - 60.14	60.14 - 72.50	72.50 - 76.89	76.89 - 100.00
	Standard of Excellence	0.00 - 3.39	3.39 - 6.71	6.71 - 11.81	11.81 - 15.85	15.85 - 100.00
Science 9 KAE	Acceptable Standard	0.00 - 38.75	38.75 - 59.30	59.30 - 78.33	78.33 - 87.58	87.58 - 100.00
	Standard of Excellence	0.00 - 0.00	0.00 - 7.47	7.47 - 21.41	21.41 - 40.82	40.82 - 100.00
Social Studies 9	Acceptable Standard	0.00 - 56.26	56.26 - 62.27	62.27 - 74.04	74.04 - 79.85	79.85 - 100.00
	Standard of Excellence	0.00 - 10.03	10.03 - 12.78	12.78 - 19.76	19.76 - 24.03	24.03 - 100.00
Social Studies 9 KAE	Acceptable Standard	0.00 - 38.79	38.79 - 53.82	53.82 - 72.42	72.42 - 84.88	84.88 - 100.00
	Standard of Excellence	0.00 - 0.00	0.00 - 5.71	5.71 - 17.19	17.19 - 36.26	36.26 - 100.00

Notes:

1. The range of values at each evaluation level is interpreted as greater than or equal to the lower value, and less than the higher value. For the Very High evaluation level, values range from greater than or equal to the lower value to 100%.
2. Participation in Provincial Achievement Tests was impacted by the flooding in June 2013 (Grade 9 only) and by the fires in May to June 2016. Caution should be used when interpreting trends over time for the province and those school authorities affected by these events.
3. Achievement Evaluation is not calculated for courses that do not have sufficient data available, either due to too few jurisdictions offering the course or because of changes in tests.

Improvement Table

For each jurisdiction, improvement evaluation consists of comparing the Current Year result for each measure with the previous three-year average. A chi-square statistical test is used to determine the significance of the improvement. This test takes into account the size of the jurisdiction in the calculation to make improvement evaluation fair across jurisdictions of different sizes.

The table below shows the definition of the 5 improvement evaluation levels based upon the chi-square result.

Evaluation Category	Chi-Square Range
Declined Significantly	3.84 + (current < previous 3-year average)
Declined	1.00 - 3.83 (current < previous 3-year average)
Maintained	less than 1.00
Improved	1.00 - 3.83 (current > previous 3-year average)
Improved Significantly	3.84 + (current > previous 3-year average)

Overall Evaluation Table

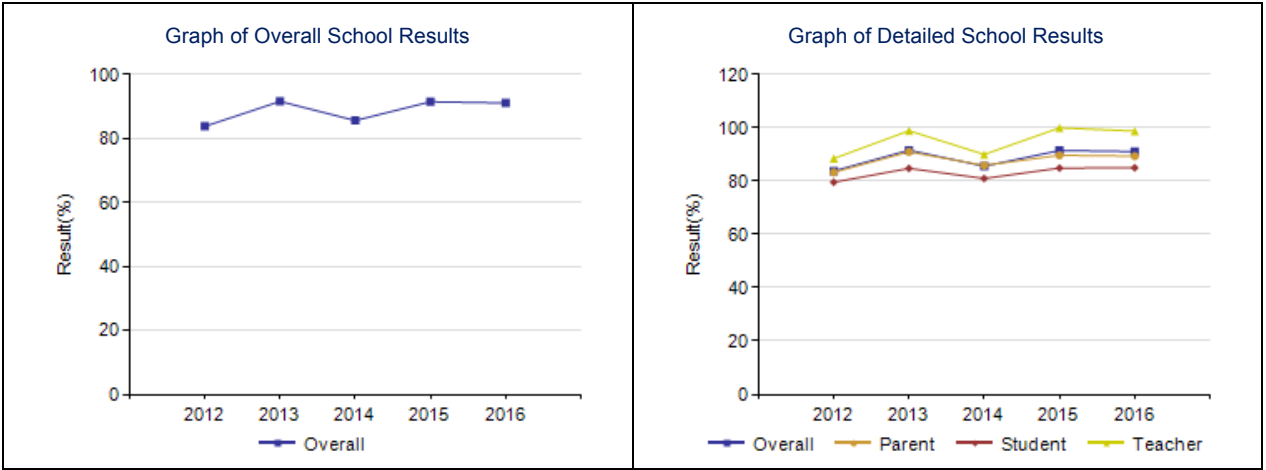
The overall evaluation combines the Achievement Evaluation and the Improvement Evaluation. The table below illustrates how the Achievement and Improvement evaluations are combined to get the overall evaluation.

	Achievement				
	Very High	High	Intermediate	Low	Very Low
Improved Significantly	Excellent	Good	Good	Good	Acceptable
Improved	Excellent	Good	Good	Acceptable	Issue
Maintained	Excellent	Good	Acceptable	Issue	Concern
Declined	Good	Acceptable	Issue	Issue	Concern
Declined Significantly	Acceptable	Issue	Issue	Concern	Concern

Program of Studies – Measure Details

Percentage of teachers, parents and students satisfied with the opportunity for students to receive a broad program of studies including fine arts, career, technology, and health and physical education.

	School					Authority					Province				
	2012	2013	2014	2015	2016	2012	2013	2014	2015	2016	2012	2013	2014	2015	2016
Overall	83.8	91.6	85.6	91.5	91.1	82.1	84.8	84.8	84.0	82.6	80.7	81.5	81.3	81.3	81.9
Teacher	88.5	98.9	90.0	100.0	98.8	91.3	94.3	89.0	91.5	90.7	87.3	87.9	87.5	87.2	88.1
Parent	83.3	91.0	85.9	89.7	89.4	76.2	77.9	83.6	80.0	77.6	78.1	78.9	79.9	79.9	80.1
Student	79.6	84.8	81.0	84.9	85.0	78.7	82.2	81.7	80.4	79.6	76.9	77.8	76.6	76.9	77.5

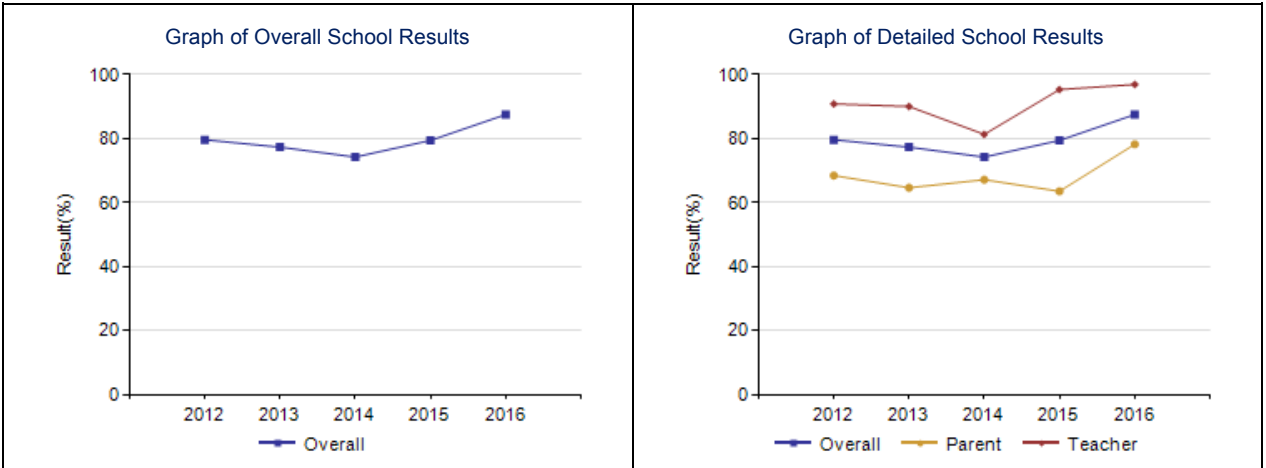


- Notes:
1. Survey results for the province and some school authorities were impacted by changes in the number of students responding to the survey through the introduction of the Tell THEM From ME survey tool in 2014.
 2. Data values have been suppressed where the number of respondents/students is fewer than 6. Suppression is marked with an asterisk (*).

Parental Involvement – Measure Details

Percentage of teachers and parents satisfied with parental involvement in decisions about their child's education.

	School					Authority					Province				
	2012	2013	2014	2015	2016	2012	2013	2014	2015	2016	2012	2013	2014	2015	2016
Overall	79.6	77.3	74.2	79.4	87.5	82.3	82.1	83.2	85.3	83.3	79.7	80.3	80.6	80.7	80.9
Teacher	90.8	90.0	81.3	95.3	96.9	93.9	90.8	90.5	94.7	94.3	88.0	88.5	88.0	88.1	88.4
Parent	68.4	64.6	67.1	63.5	78.2	70.6	73.4	75.9	76.0	72.3	71.4	72.2	73.1	73.4	73.5

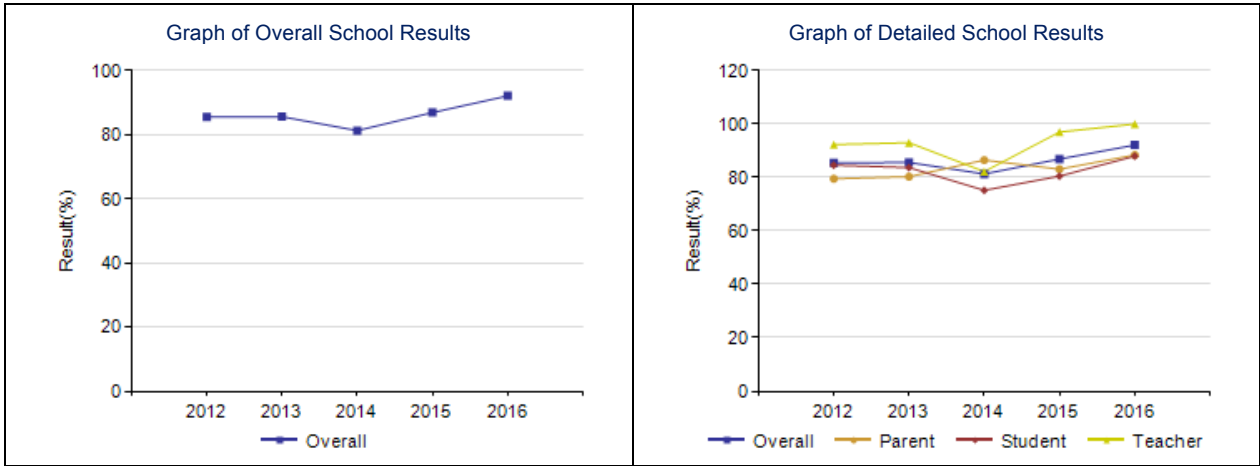


- Notes:
1. Survey results for the province and some school authorities were impacted by changes in the number of students responding to the survey through the introduction of the Tell THEM From ME survey tool in 2014.
 2. Data values have been suppressed where the number of respondents/students is fewer than 6. Suppression is marked with an asterisk (*).

Education Quality – Measure Details

Percentage of teachers, parents and students satisfied with the overall quality of basic education.

	School					Authority					Province				
	2012	2013	2014	2015	2016	2012	2013	2014	2015	2016	2012	2013	2014	2015	2016
Overall	85.5	85.6	81.3	86.9	92.1	89.0	91.7	91.0	90.7	90.4	89.4	89.8	89.2	89.5	90.1
Teacher	92.3	93.0	82.2	97.0	100.0	97.3	97.9	95.7	98.0	98.1	95.4	95.7	95.5	95.9	96.0
Parent	79.5	80.3	86.5	83.1	88.4	82.9	87.8	89.7	85.4	84.5	84.2	84.9	84.7	85.4	86.1
Student	84.6	83.7	75.2	80.5	88.0	86.9	89.3	87.4	88.7	88.5	88.6	88.7	87.3	87.4	88.0

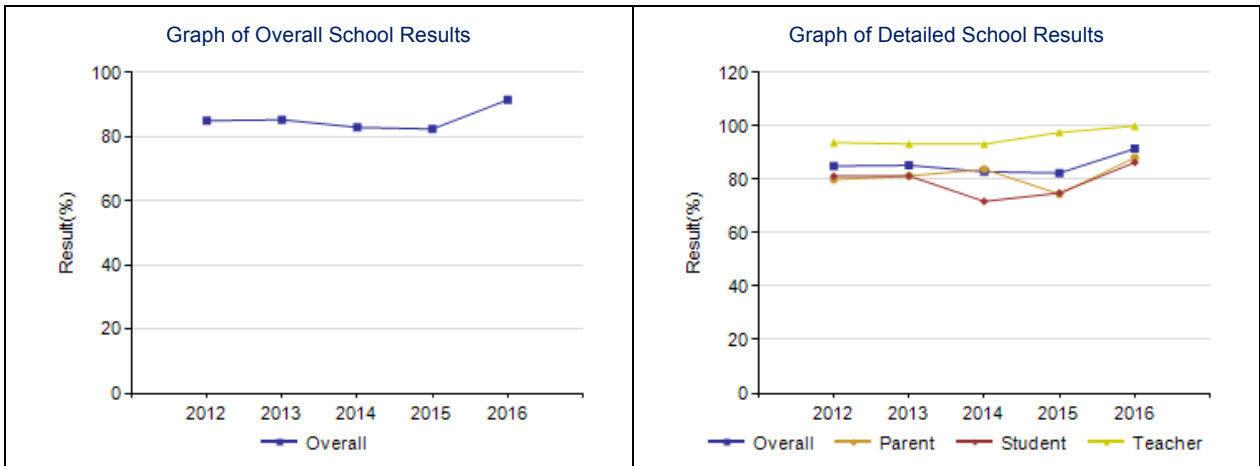


- Notes:
1. Survey results for the province and some school authorities were impacted by changes in the number of students responding to the survey through the introduction of the Tell THEM From ME survey tool in 2014.
 2. Data values have been suppressed where the number of respondents/students is fewer than 6. Suppression is marked with an asterisk (*).

Safe and Caring – Measure Details

Percentage of teacher, parent and student agreement that: students are safe at school, are learning the importance of caring for others, are learning respect for others and are treated fairly in school.

	School					Authority					Province				
	2012	2013	2014	2015	2016	2012	2013	2014	2015	2016	2012	2013	2014	2015	2016
Overall	85.0	85.3	82.9	82.4	91.5	88.8	90.1	90.1	90.0	90.9	88.6	89.0	89.1	89.2	89.5
Teacher	93.8	93.3	93.2	97.6	100.0	97.5	96.9	96.3	97.9	98.6	94.8	95.0	95.3	95.4	95.4
Parent	80.0	81.3	83.8	74.5	88.2	86.7	88.6	91.3	88.4	89.2	87.4	87.8	88.9	89.3	89.8
Student	81.2	81.3	71.8	74.9	86.4	82.2	84.8	82.7	83.6	84.8	83.7	84.2	83.1	83.0	83.4

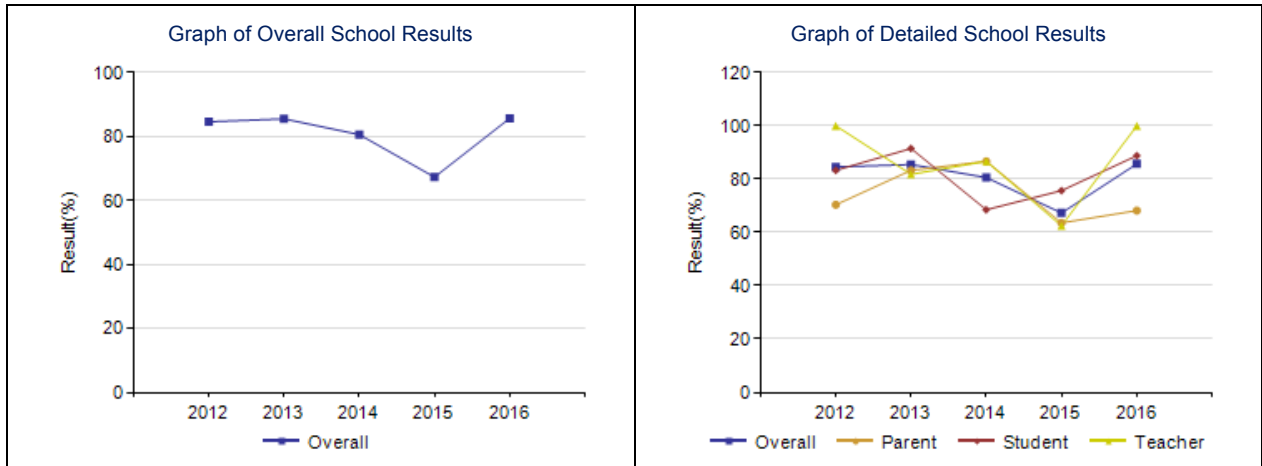


- Notes:
1. Survey results for the province and some school authorities were impacted by changes in the number of students responding to the survey through the introduction of the Tell THEM From ME survey tool in 2014.
 2. Data values have been suppressed where the number of respondents/students is fewer than 6. Suppression is marked with an asterisk (*).

School Improvement – Measure Details

Percentage of teachers, parents and students indicating that their school and schools in their jurisdiction have improved or stayed the same the last three years.

	School					Authority					Province				
	2012	2013	2014	2015	2016	2012	2013	2014	2015	2016	2012	2013	2014	2015	2016
Overall	84.6	85.5	80.6	67.3	85.7	82.3	84.8	84.4	84.1	83.9	80.0	80.6	79.8	79.6	81.2
Teacher	100.0	81.8	86.7	62.5	100.0	87.7	87.8	88.3	86.6	91.2	81.1	80.9	81.3	79.8	82.3
Parent	70.4	83.3	86.7	63.6	68.2	76.8	80.2	82.5	81.7	76.4	76.2	77.9	77.0	78.5	79.7
Student	83.3	91.5	68.5	75.7	88.8	82.4	86.4	82.2	84.0	84.3	82.7	82.9	81.2	80.7	81.5



Notes:

1. Survey results for the province and some school authorities were impacted by changes in the number of students responding to the survey through the introduction of the Tell THEM From ME survey tool in 2014.
2. Data values have been suppressed where the number of respondents/students is fewer than 6. Suppression is marked with an asterisk (*).